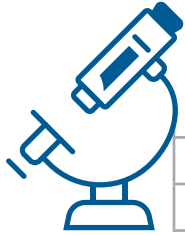




RESEARCH



TOTAL GRANTS AWARDED - FOR IU FISCAL YEAR ENDING JUNE 30, 2020	\$408,311,053
NIH FUNDING - FOR FEDERAL FISCAL YEAR ENDING SEPTEMBER 30, 2020	\$213,142,616
NIH RANKING - FOR FEDERAL FISCAL YEAR ENDING SEPTEMBER 30, 2020	29

EDUCATION

CLASS OF 2024



5,988
APPLICATIONS
RECEIVED



365
STUDENTS
ENROLLED



191/174
MALE VS
FEMALE

69

UNDERREPRESENTED
MINORITIES



288
IN STATE



3.77
AVERAGE GPA

77
OUT OF STATE



511
AVERAGE MCAT

MEDICAL STUDENT BODY

BLOOMINGTON	90
EVANSVILLE	80
FORT WAYNE	87
INDIANAPOLIS	828
MUNCIE	56
NORTHWEST GARY	75
SOUTH BEND	90
TERRE HAUTE	77
WEST LAFAYETTE	58
TOTAL	1,441



MD ANNUAL TUITION

IN STATE	\$36,036
OUT OF STATE	\$61,419

GRADUATE MEDICAL EDUCATION

TOTAL RESIDENTS + FELLOWS	1,273
TOTAL ACCREDITED PROGRAMS	97
OTHER PROGRAMS	75

GRADUATE + UNDERGRADUATE PROGRAMS

MASTER'S STUDENTS	194
PHD STUDENTS	225
HEALTH PROFESSIONS PROGRAM	277

FACULTY AND STAFF

FACULTY

VOLUNTEER	3,737	FULL TIME	2,914
PART TIME	322		

STAFF

TOTAL	2,035
-------	-------



IU SCHOOL OF MEDICINE DIVERSITY FACT SHEET ACADEMIC YEAR 2020-2021

	TOTAL	FEMALE	INTER NATIONAL	HISPANIC OR LATINO	TWO OR MORE RACES	AMERICAN INDIAN/ALASKAN NATIVE	AFRICAN AMERICAN / BLACK	ASIAN AMERICAN/ ASIAN	NATIVE HAWAIIAN/ PACIFIC ISLANDER	WHITE	UNKNOWN
STUDENTS¹											
MEDICAL EDUCATION	1,441	47.0%	<1.0%	11.5%	3.9%	0.0%	6.5%	15.5%	0.0%	62.2%	<1.0%
GRADUATE: DOCTORAL PROGRAMS	226	56.2%	32.3%	5.3%	4.0%	0.0%	3.1%	8.4%	0.0%	46.9%	<1.0%
GRADUATE: MASTER'S PROGRAMS	150	67.3%	2.0%	10.7%	3.3%	0.0%	14.0%	10.7%	0.0%	58.7%	<1.0%
UNDERGRADUATE PROGRAMS	348	83.6%	3.2%	6.0%	3.4%	0.0%	6.3%	4.6%	0.0%	75.6%	1.1%
FULL-TIME STAFF¹											
PROFESSIONAL	1,302	77.9%	3.5%	3.5%	1.8%	<1.0%	7.2%	4.8%	<1.0%	78.8%	<1.0%
ADMINISTRATIVE (CLERICAL)	242	90.5%	2.5%	2.9%	<1.0%	<1.0%	12.8%	<1.0%	0.0%	79.3%	<1.0%
FUNCTIONAL (RESEARCH/TECHNICAL)	449	67.2%	5.1%	5.3%	2.4%	<1.0%	9.1%	7.8%	0.0%	69.5%	<1.0%
FULL-TIME FACULTY²											
TENURE-TRACK/TENURED	686	30.0%	--	3.6%	1.3%	0.0%	2.6%	22.9%	0.0%	70.1%	<1.0%
NON-TENURE	2,228	40.2%	--	3.1%	<1.0%	<1.0%	4.2%	21.7%	<1.0%	69.7%	<1.0%
TRAINEES³											
RESIDENTS/FELLOWS	1,265	45.4%	15.9%	4.5%	--	<1.0%	5.4%	20.0%	0.0%	69.5%	0.0%
POST-DOCTORAL FELLOWS	231	48.9%	68.4%	2.2%	<1.0%	0.0%	2.2%	8.2%	<1.0%	18.2%	0.0%
STATE OF INDIANA⁴											
POPULATION ESTIMATES, 2019	6,731,219	50.7%	--	7.3%	2.2%	0.4%	9.9%	2.6%	0.1%	84.8%	--

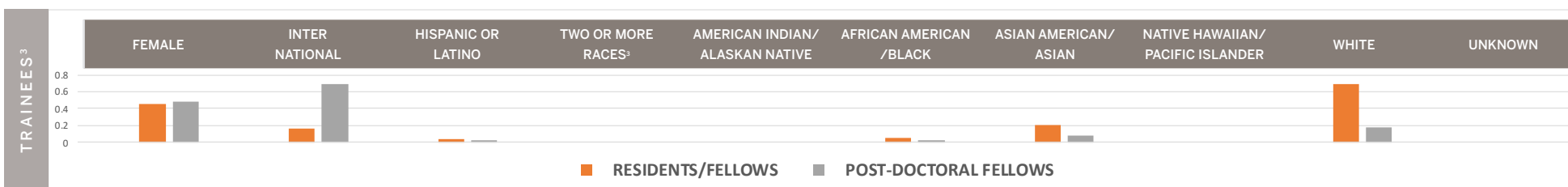
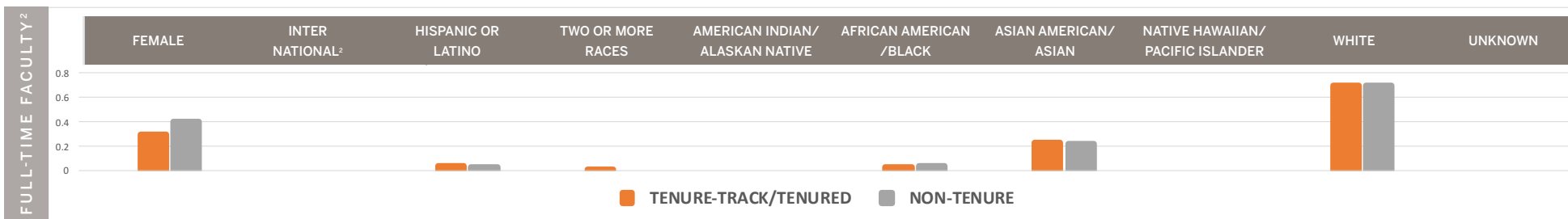
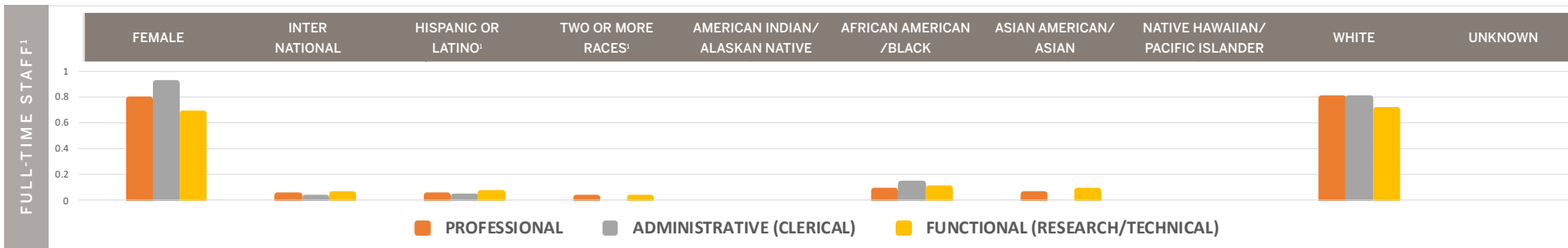
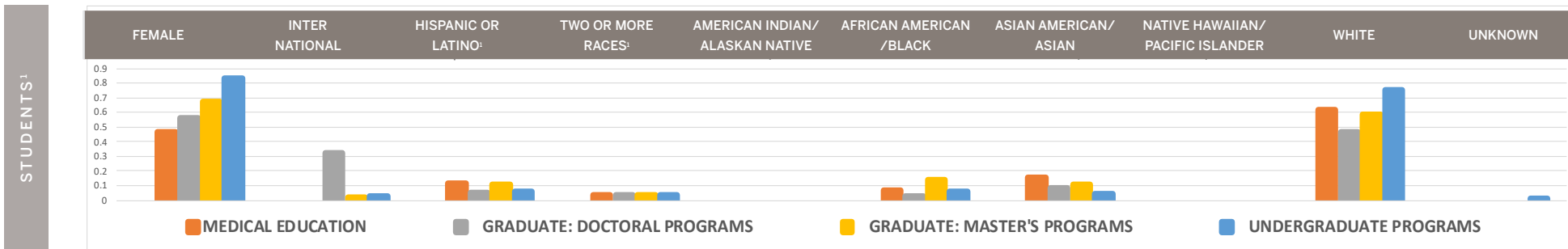
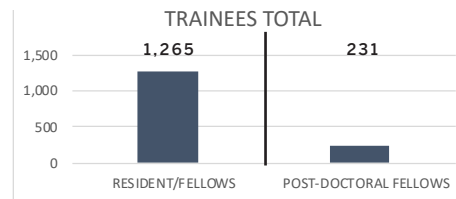
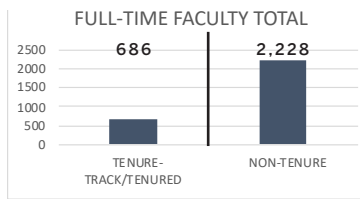
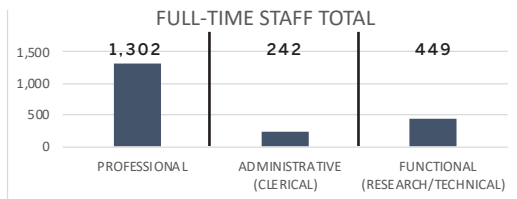
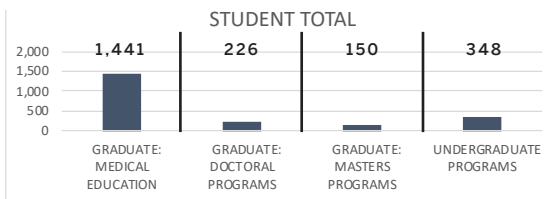
¹IU STUDENT AND STAFF DATA FOLLOWS FEDERAL REPORTING GUIDES CATEGORIZING INDIVIDUALS WHO SELECTED MORE THAN ONE RACE OR ETHNICITY INTO INTERNATIONAL, HISPANIC OR LATINX, OR TWO OR MORE RACES. [SEE UIRR DATA GUIDE FOR MORE INFORMATION](#) ABOUT LOGIC APPLIED. THE ORDER OF RACE OR ETHNICITY CATEGORIES, FIRST, FOLLOWS LOGIC APPLIED, AND THEN, ALPHABETICALLY LISTS SINGLE-SELECTED CATEGORIES.

²IU SCHOOL OF MEDICINE FACULTY DATA SYSTEM DOES NOT REPORT INTERNATIONAL STATUS AS A RACE OR ETHNICITY CATEGORY.

³IU SCHOOL OF MEDICINE RESIDENCY DATA SYSTEM DOES NOT REPORT 'TWO OR MORE RACES' AS A CATEGORY.

⁴SOURCE: U.S. CENSUS BUREAU

IU SCHOOL OF MEDICINE DIVERSITY FACT SHEET ACADEMIC YEAR 2020-2021



¹IU STUDENT AND STAFF DATA FOLLOWS FEDERAL REPORTING GUIDES CATEGORIZING INDIVIDUALS WHO SELECTED MORE THAN ONE RACE OR ETHNICITY INTO INTERNATIONAL, HISPANIC OR LATINO, OR TWO OR MORE RACES.

²SEE [UIRR DATA GUIDE FOR MORE INFORMATION](#) ABOUT LOGIC APPLIED. THE ORDER OF RACE OR ETHNICITY CATEGORIES, FIRST, FOLLOWS LOGIC APPLIED, AND THEN, ALPHABETICALLY LISTS SINGLE-SELECTED CATEGORIES.

³IU SCHOOL OF MEDICINE FACULTY DATA SYSTEM DOES NOT REPORT INTERNATIONAL STATUS AS A RACE OR ETHNICITY CATEGORY.

⁴IU SCHOOL OF MEDICINE RESIDENCY DATA SYSTEM DOES NOT REPORT 'TWO OR MORE RACES' AS A CATEGORY.

